



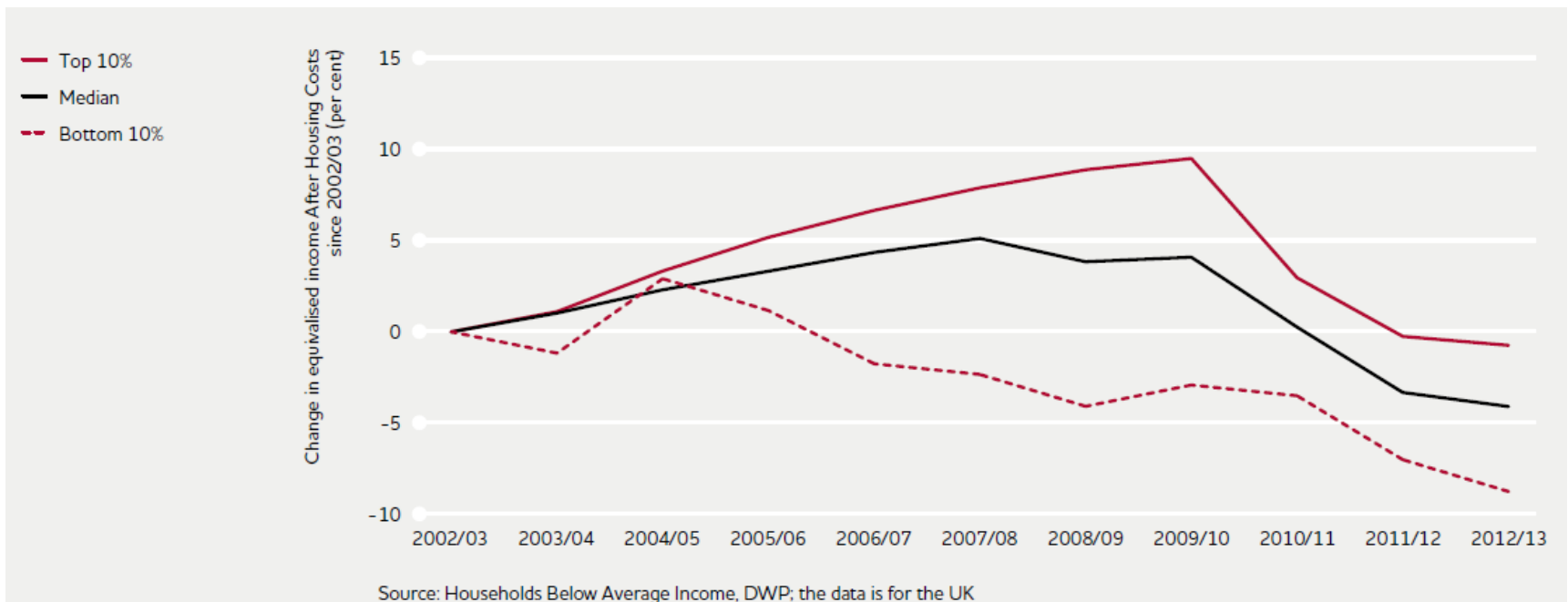
Modern Poverty

Monitoring, Poverty and Social Exclusion 2014 – a personal view

Peter Kenway
New Policy Institute

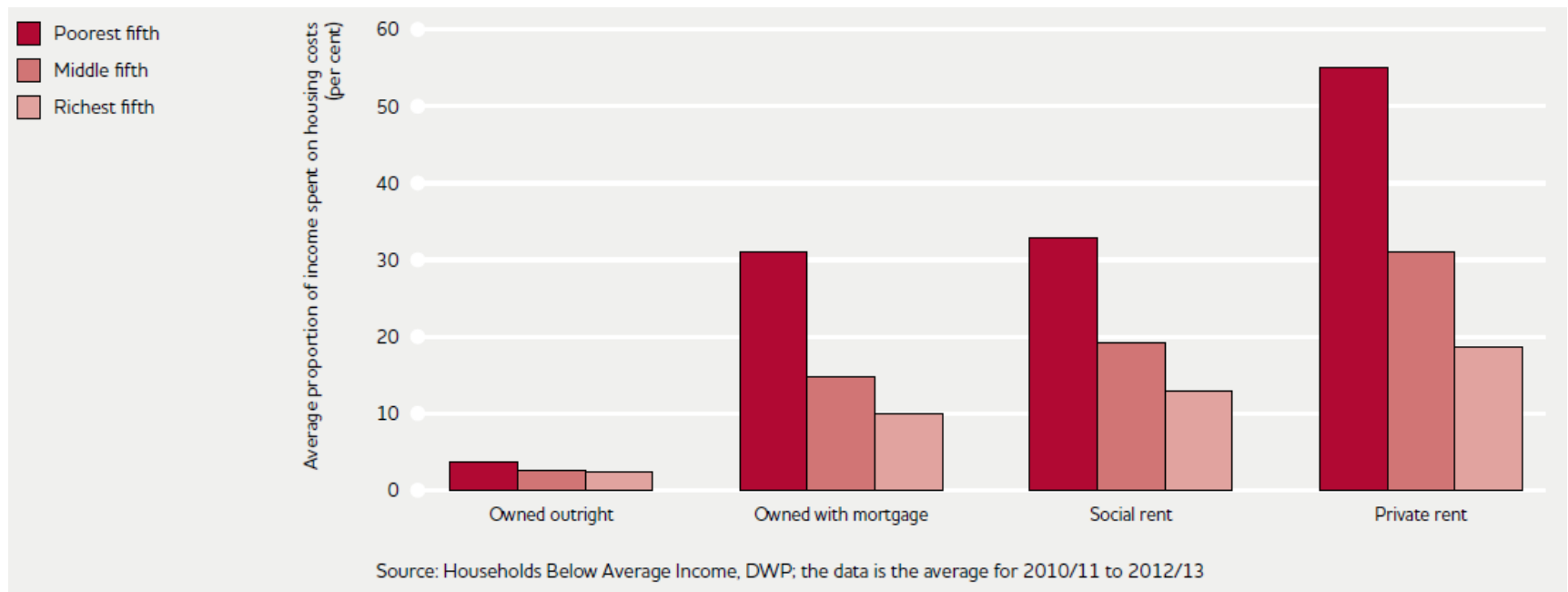
Dramatis personae: net household income

Incomes are lower than a decade ago. Average incomes have fallen more than high ones, low incomes have fallen the most.



Dramatis personae: housing costs

Private renters and the poorest households spend a higher share of their income on housing than other groups.



Dramatis personae : weekly poverty line

13m people have a sub-poverty-line household income

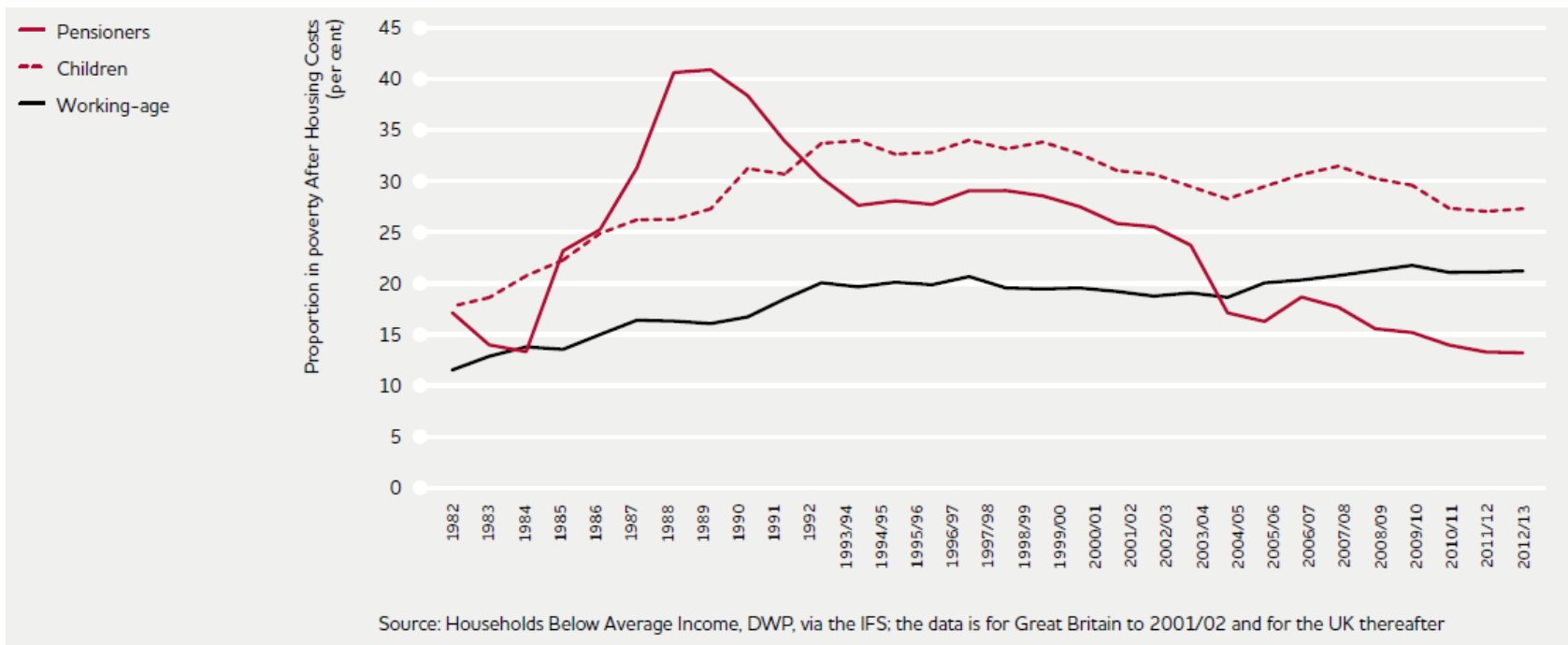
Measure	Single adult	Two adults, no children	Two adults, children aged 5 and 14	One adult, child aged 5
Contemporary 2012/13	£130	£224	£364	£175
Fixed 2010/11	£136	£235	£380	£183

NB: the poverty threshold is for weekly income after housing costs.

Single adult “MIS”: £133 for food, alcohol, clothing, fuel, household/personal goods and services, non-car travel costs, household insurance, other housing costs

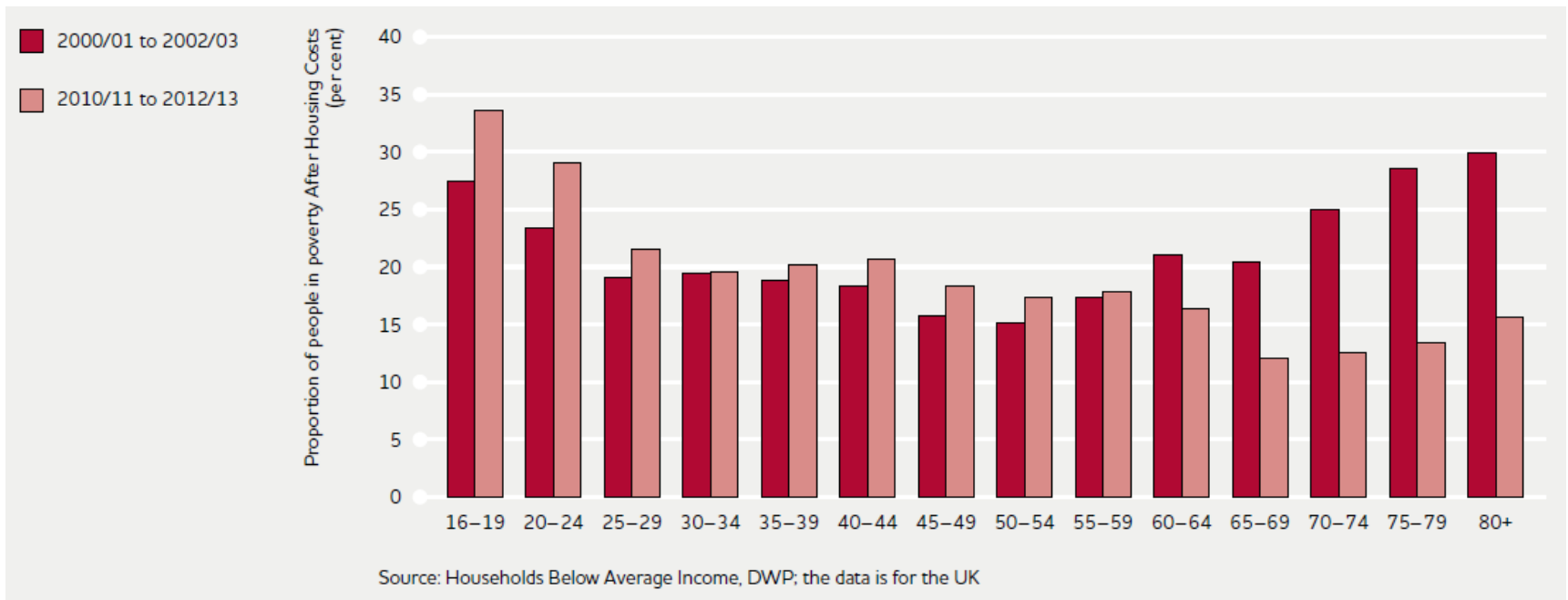
Poverty's face and feel are changing .. ever more a problem of the young: children ...

Pensioner poverty is now at the lowest on record. Poverty among working-age adults is near the highest on record.



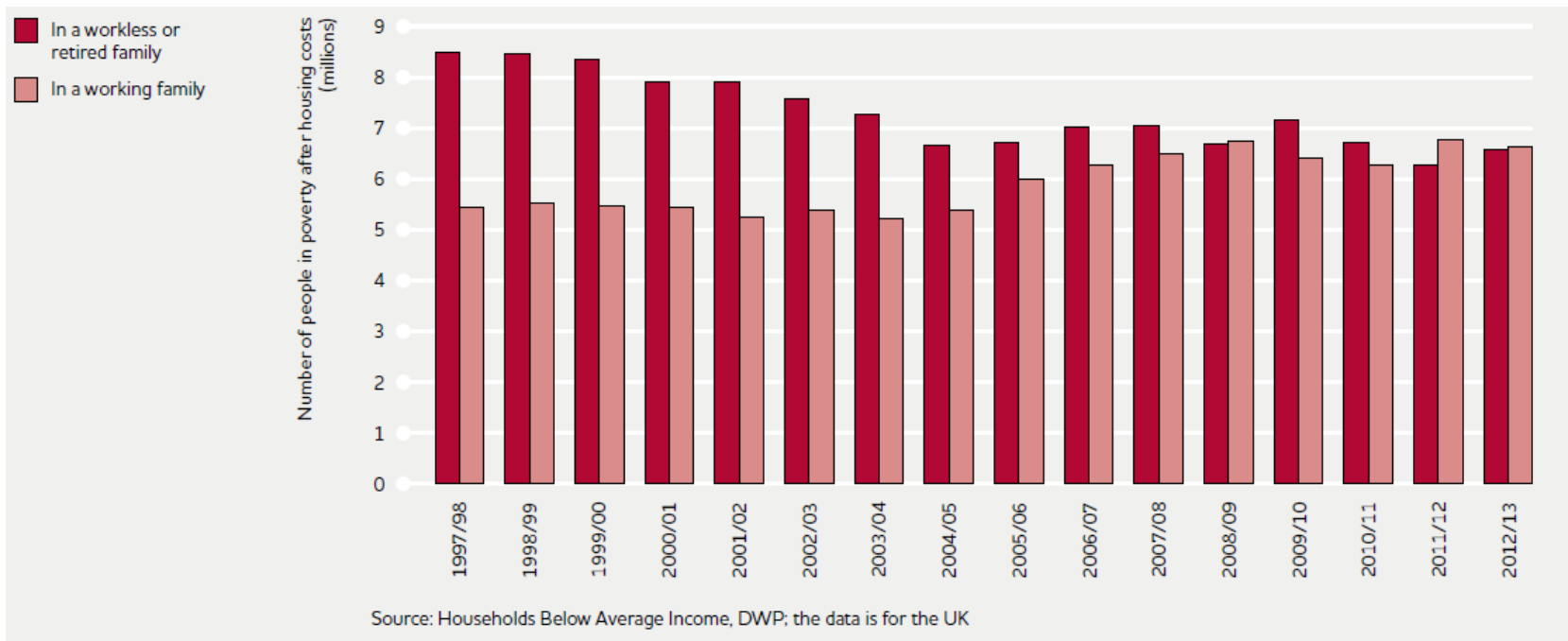
... and young adults ...

The poverty rate among the under 30s is higher than it was a decade ago, while the poverty rate for the over 65s has halved.



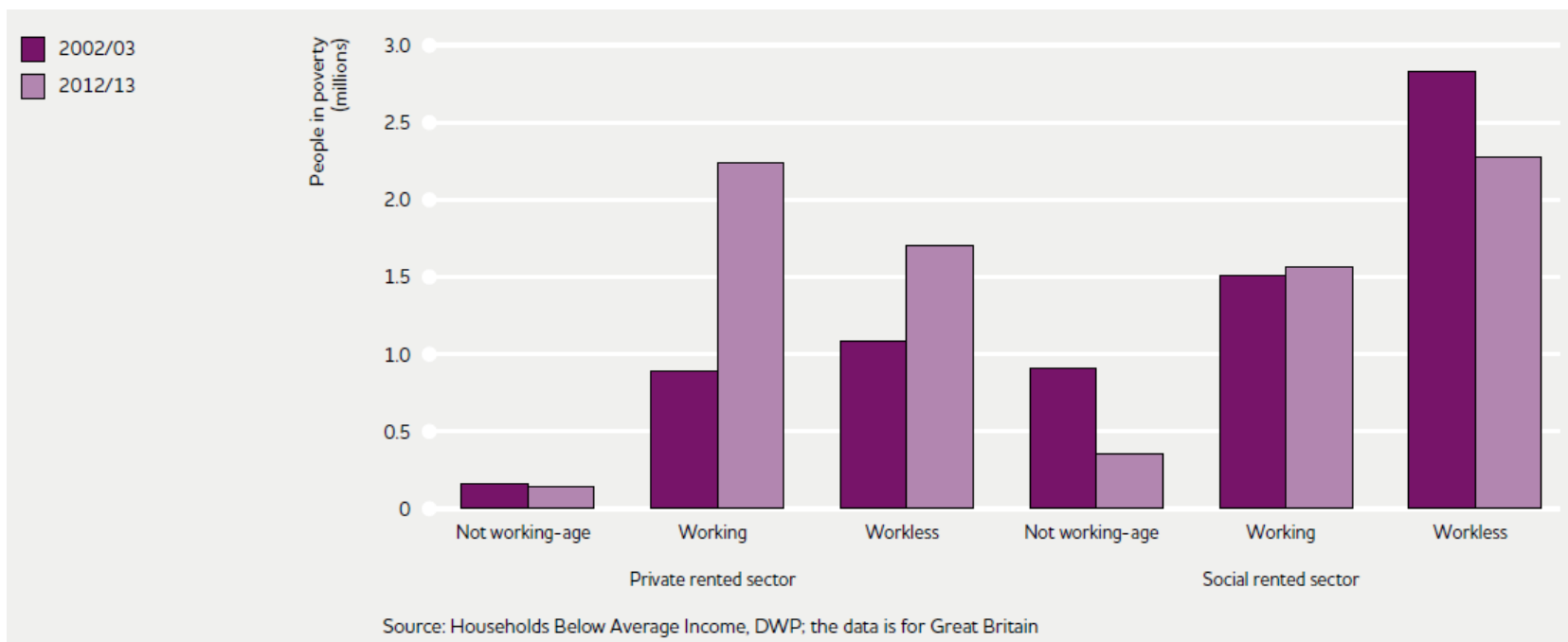
... in working families where working income is too slight ...

Half of all people in poverty live in a family where someone is in paid work.



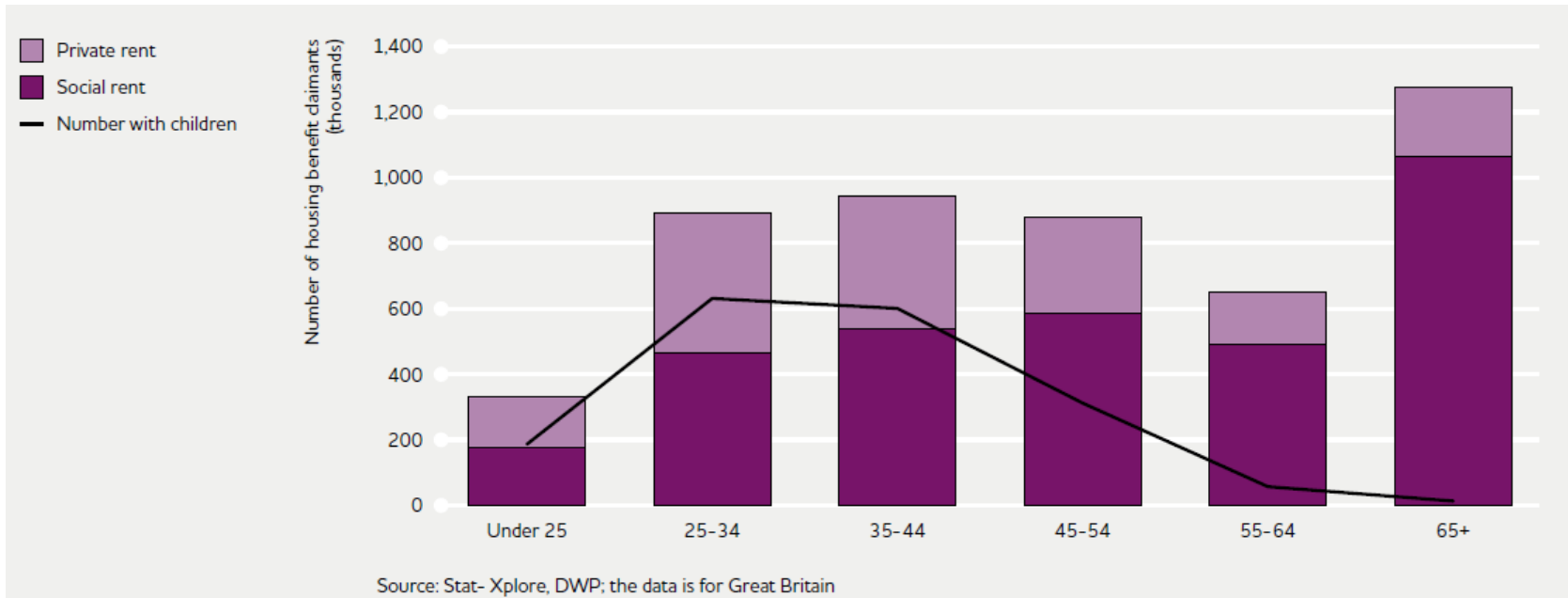
... and likely renting from a private landlord

There are now as many people in poverty living in working families in the private rented sector as there are living in workless families in the social rented sector.



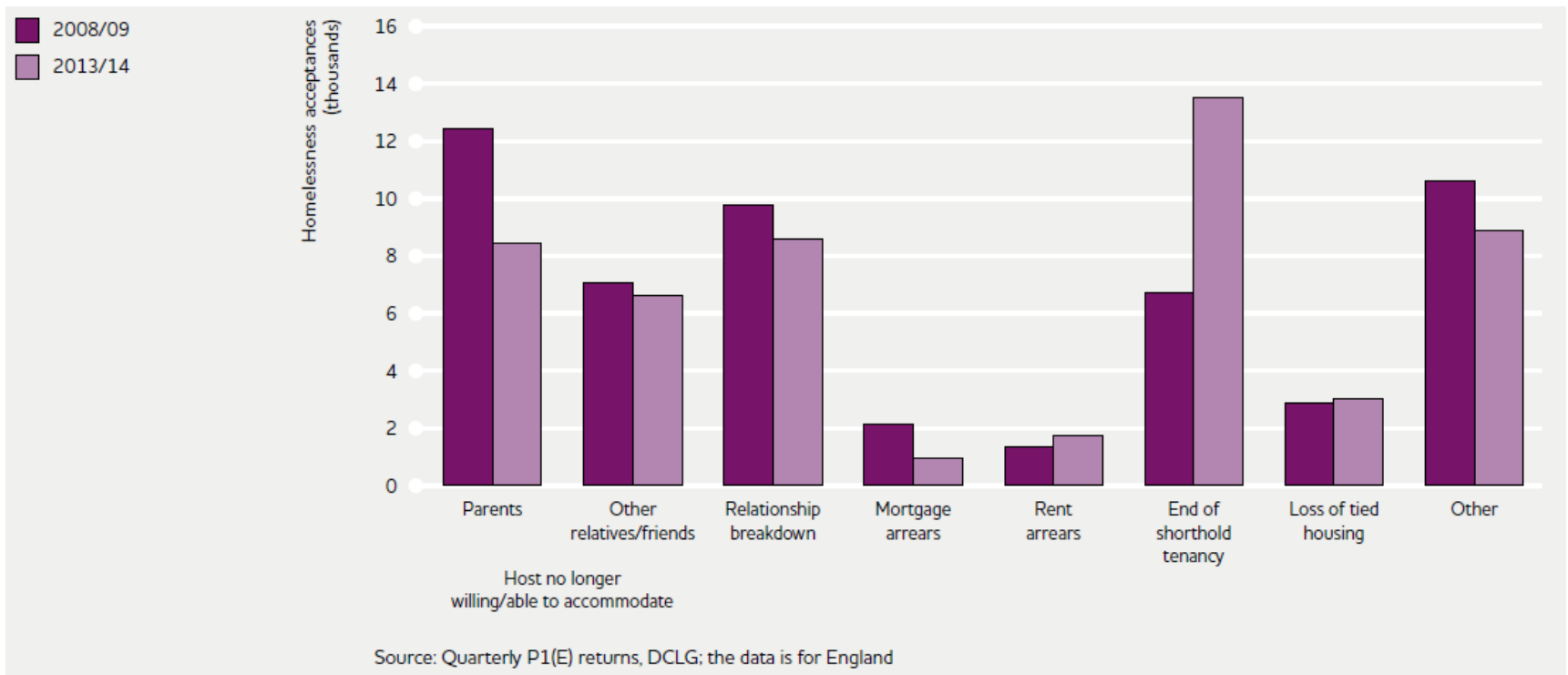
A private rented sector sucking up housing benefit (even from working households) ...

Around half of housing benefit claimants under the age of 35 are private renters; most of those aged 65 plus are social renters.



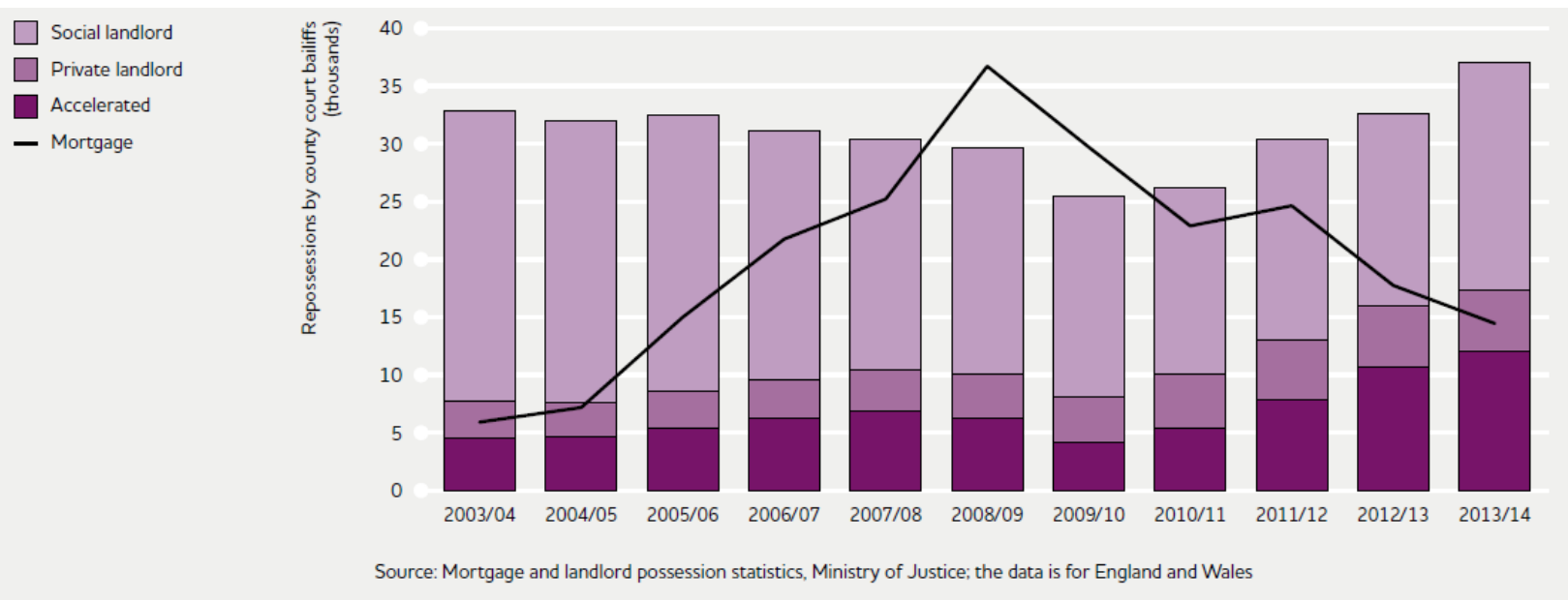
... spawning homelessness ...

The termination of private rented tenancies is now the most common cause of homelessness.



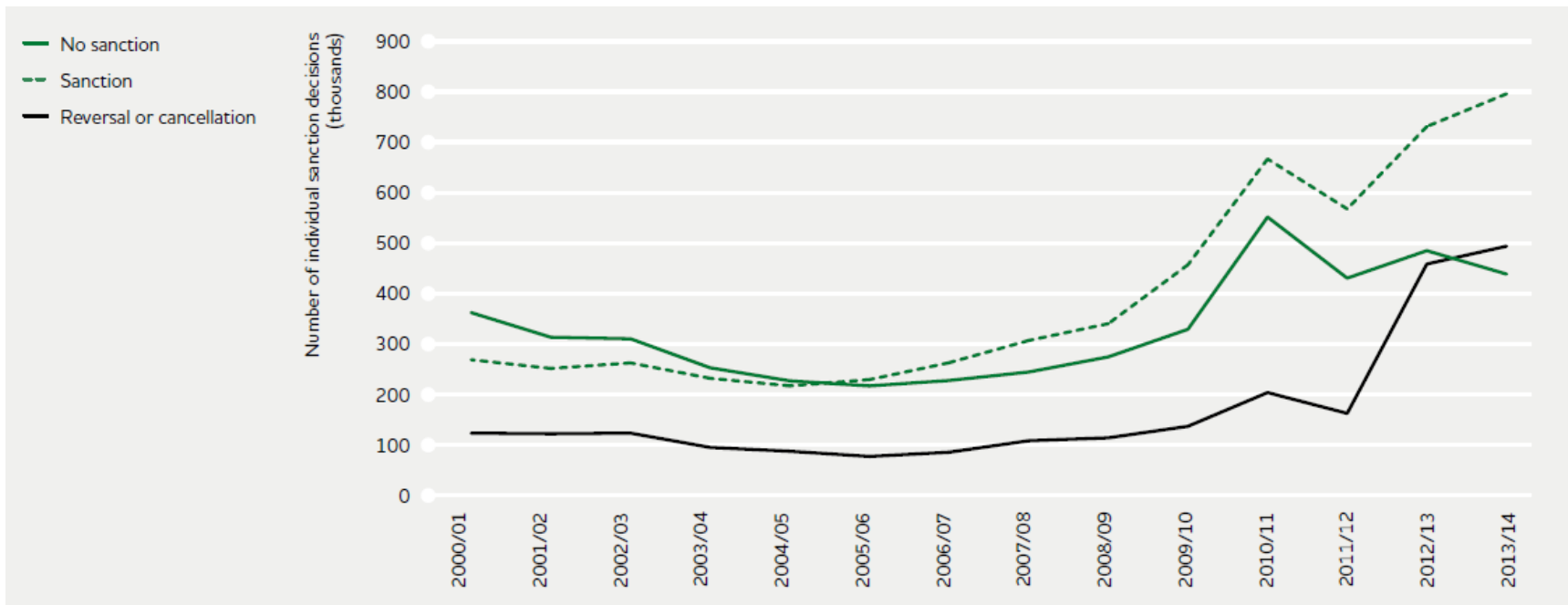
... and adding another twist to the spiral of housing insecurity

The number of landlord repossessions is up for the 4th year, now more than double the number of mortgage repossessions.



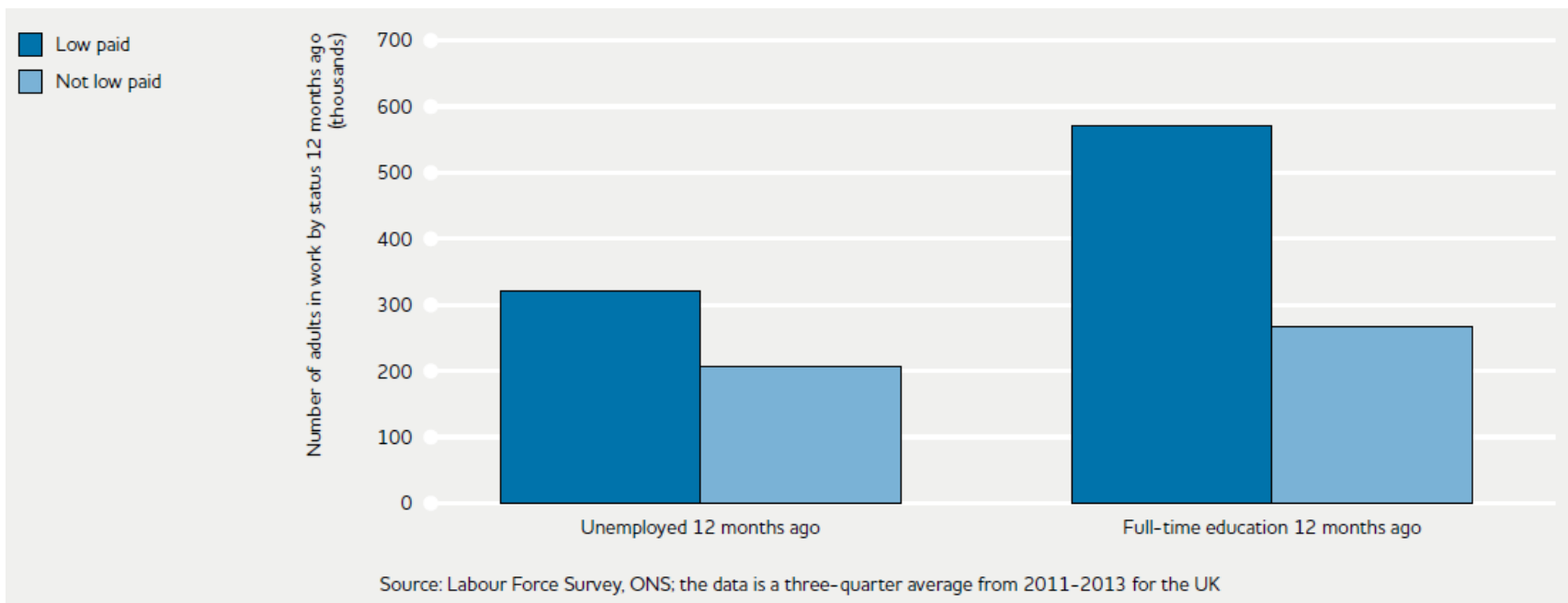
A social security regime for those unemployed ever more punitive ...

The number of JSA claims resulting in a sanction is at a record level. The number of reversals and cancellations due to claimants leaving JSA before a sanction is levied has also never been higher.



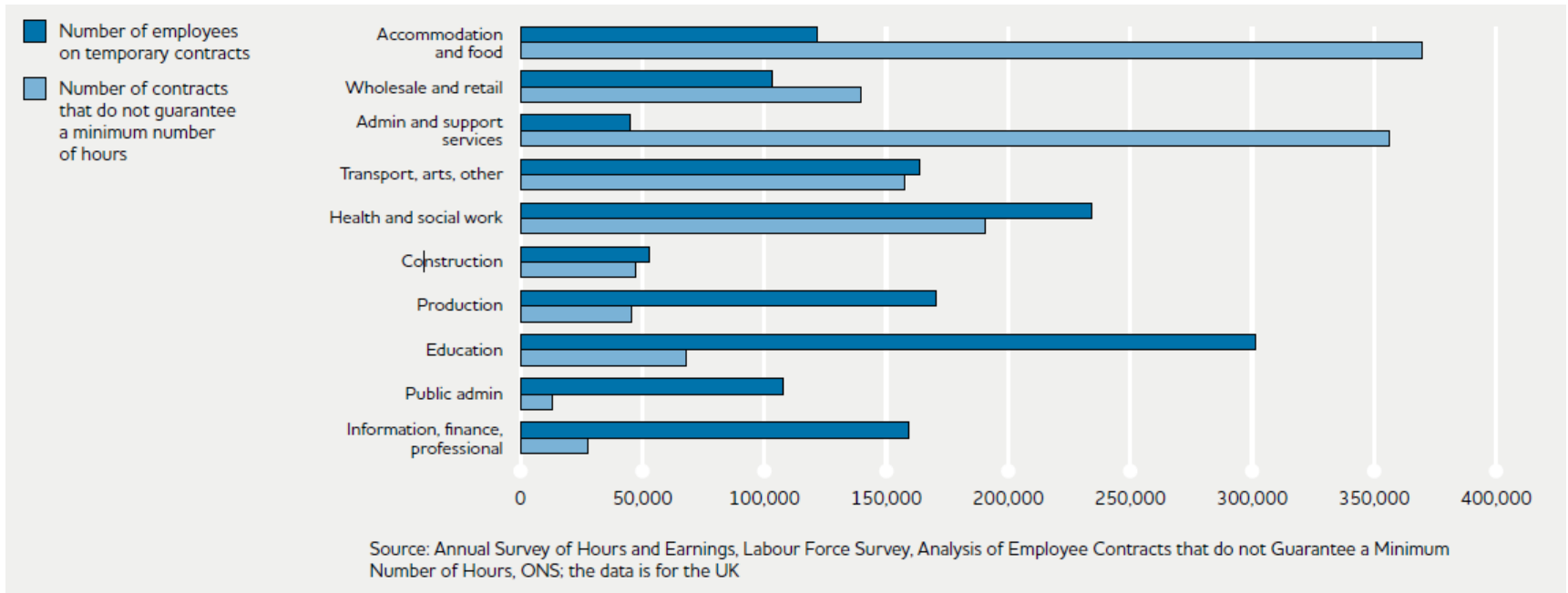
... helping to push workers into low paid ...

Adults who were unemployed or in education 12 months ago and who are now in work are more likely to be low paid than not.



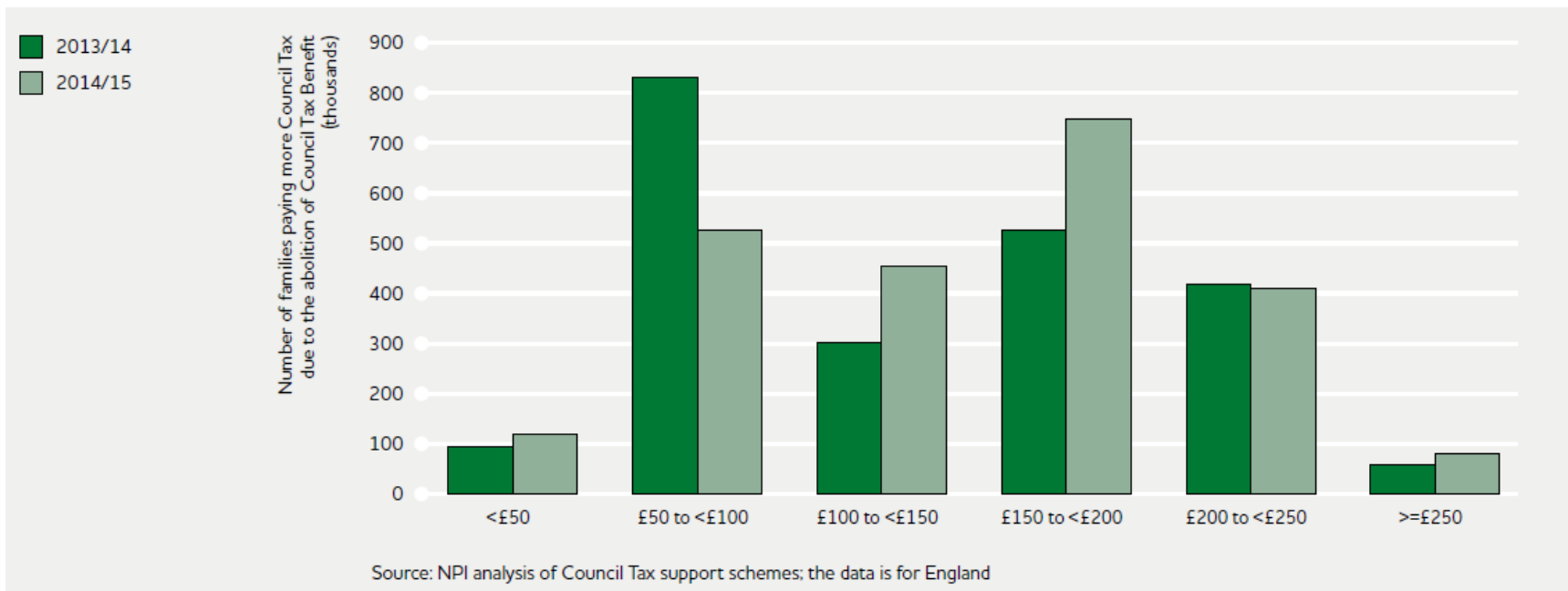
... and insecure work

The 1.4m contracts with no minimum hours are concentrated in industries with low average wages, whereas temporary contracts are more evenly spread.



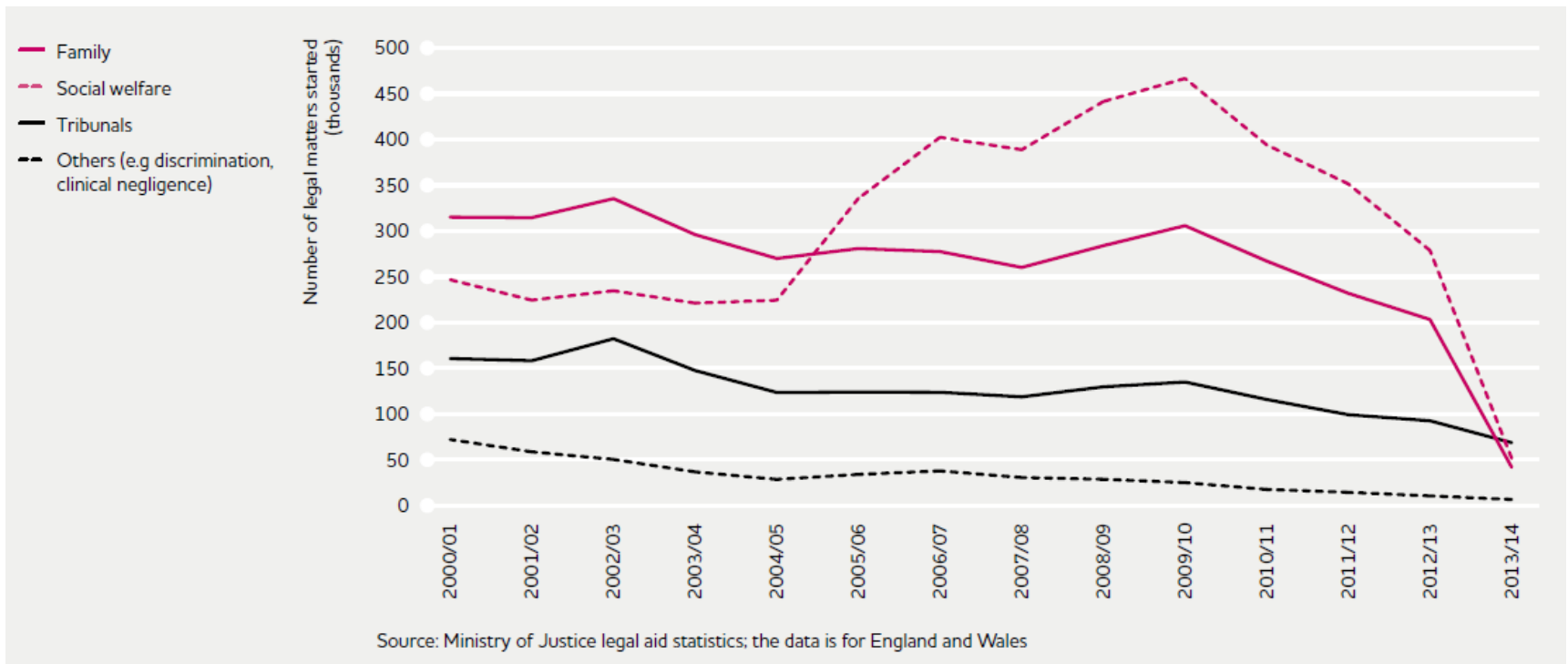
The poorest pursued for a tax they were once spared ...with court costs on top ...

Half a million low-income families pay at least £200 a year more in Council Tax than they did before Council Tax Benefit was abolished.



... as the 4th pillar of the welfare state crumbles

While the volumes of legal assistance have fallen across the board, social welfare and family law have seen the biggest decreases.



Modern poverty



Young, working-age

renting a place too costly and insecure to call home

perched precariously

between low paid work

and a punitive safety net

less able to exercise

diminishing rights